

# MAIN CONTAINER TYPES



Dry Van Cargo

[20 ft specs](#)

[40 ft specs](#)

[High Cube](#)



Flat Rack

[20 ft specs](#)

[40 ft specs](#)



Open Top

[20 ft specs](#)

[40 ft specs](#)



Reefer

[20 ft specs](#)

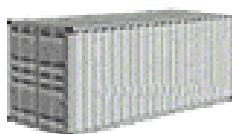
[40 ft specs](#)

[High Cube](#)

All cargoes have individual or specific transportation needs. Each container type is specially geared to the requirements of different types of cargoes.

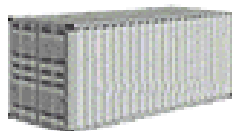
If it is your responsibility to ensure that transportation of your cargo is fulfilled, make sure the goods are packed and stowed in the right container, economically and safely.

- The **maximum payload** may be limited at times depending on road regulations at the Country of Origin and Destination.
- **Dimensions** for individual containers may vary slightly, depending on the shipping line used.



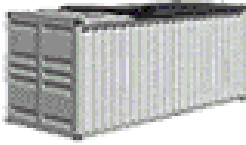
**DRY VAN CONTAINER:** Suitable for commodities in bundles, cartons, boxes, loose cargo, bulk, furniture, etc. (containers can be modified into hangers containers suitable to carry garments.)

Size	Weight* Kilograms Lbs			Internal Dimensions* millimeters feet/inches			Door Openings* millimeters feet/inches		Vol. m <sup>3</sup> ft. <sup>3</sup>	Notes
	Max. Gross Wt.	Tare Wt.	Max Payload	Length	Width	Height	Width	Height	Capacity	
20	24,000	2,200	21,800	5,902	2,350	2,392	2,341	2,280	33.2	All steel construction
	52,910	4,850	48,060	19' 4 <sup>23</sup> / <sub>64</sub> "	7' 8 <sup>33</sup> / <sub>64</sub> "	7' 10 <sup>11</sup> / <sub>64</sub> "	7' 8 <sup>11</sup> / <sub>64</sub> "	7' 5 <sup>49</sup> / <sub>64</sub> "	1,172	
40	30,480	3,800	26,680	12,032	2,350	2,390	2,338	2,280	67.6	
	67,200	8,380	58,820	39' 5 <sup>45</sup> / <sub>64</sub> "	7' 8 <sup>33</sup> / <sub>64</sub> "	7' 10 <sup>7</sup> / <sub>64</sub> "	7' 8 <sup>3</sup> / <sub>64</sub> "	7' 5 <sup>49</sup> / <sub>64</sub> "	2,387	



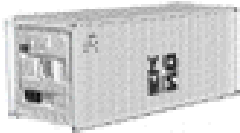
**DRY VAN HIGH CUBE CONTAINER:** Same as dry containers, but higher volume capacity.

Size	Weight* Kilograms Lbs			Internal Dimensions* millimeters feet/inches			Door Openings* millimeters feet/inches		Vol. m <sup>3</sup> ft. <sup>3</sup>	Notes
	Max. Gross Wt.	Tare Wt.	Max Payload	Length	Width	Height	Width	Height	Capacity	
40	30,480	3,900	26,580	12,033	2,350	2,695.5	2,338	2,585	76.2	steel
	67,200	8,600	58,600	39' 5 <sup>47</sup> / <sub>64</sub> "	7' 8 <sup>33</sup> / <sub>64</sub> "	8' 10 <sup>1</sup> / <sub>8</sub> "	7' 8 <sup>3</sup> / <sub>64</sub> "	8' 5 <sup>49</sup> / <sub>64</sub> "	2,690	



**OPEN TOP CONTAINER:** Suitable for high large piece cargo that cannot be loaded through container doors such as machinery, sheet glass, marble, building materials and lumber.

Size	Weight*			Internal Dimensions*			Door Openings*		Vol.	Notes
	Kilograms Lbs			millimeters feet/inches			millimeters feet/inches		m <sup>3</sup> ft. <sup>3</sup>	
Feet	Max. Gross Wt.	Tare Wt.	Max Payload	Length	Width	Height	Width	Height	Capacity	
20	24,000	2,140	21,860	5,894	2,344	2,347	2,336	2,275	31.5	Door headlock Removeable Steel
	52,910	4,717	48,192	19' 4 1/8"	7' 8 5/16"	7' 8 3/8"	7' 7 15/16"	7' 5 1/2"	1,112	
40	30,480	3,700	26,780	12,027	2,344	2,347	2,336	2,275	67.0	
	67,200	8,158	59,049	39' 5 1/2"	7' 8 5/16"	7' 8 3/8"	7' 7 15/16"	7' 5 1/2"	2,365.6	



**REEFER CONTAINER:** Suitable for transporting perishable cargo such as vegetables, fruit, meat, etc.

Size	Weight*			Internal Dimensions*			Door Openings*		Vol.	Notes
	Kilograms Lbs			millimeters feet/inches			millimeters feet/inches		m <sup>3</sup> ft. <sup>3</sup>	
Feet	Max. Gross Wt.	Tare Wt.	Max Payload	Length	Width	Height	Width	Height	Capacity	
20	25,400	2,870	22,530	5,460	2,240	2,225	2,240	2,180		Aluminium  Aluminium & Stainless Steel
	56,000	6,330 (without generator)	49,670 (without generator)	17' 10 3/4"	88 1/16"	87 1/2"	88 1/6"	85 5/8"		
40	32,500	4,535	27,965	11,550	2,250	2,215	2,250	2,160		
	71,650	9,998	61,652	37' 10 1/2"	88 1/2"	87 1/2"	88 1/2"	85"		



**FLAT RACK CONTAINER:** Used for carrying awkward and oversize loads such as machinery, cables, drums, sheet and steel coils, heavy vehicles, timber and forest products.

Size	Weight*			Internal Dimensions*			Notes
	Kilograms Lbs			millimeters feet/inches			
Feet	Max. Gross Wt.	Tare Wt.	Max Payload	Length	Width	Height	
20	25,400	3,080	22,320	5,988	2,398	2,231	Steel
	56,000	6,790	49,210	19' 7 3/4"	7' 10 3/8"	7' 7 3/8"	
40	45,000	5,300	39,700	12,064 (between headers)	2,369 (deck width)	1,943 (loading height)	
	99,202	11,683	87,518	11,662 (between posts)	2,179 (between stanchions)		